



By appointment to The Royal Danish Court

# morsø

since 1853



MORSØ GARDEN & TERRA OUTDOOR TABLE





By appointment to The Royal Danish Court

# morsø

since 1853



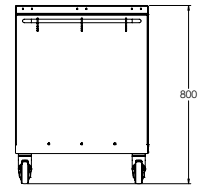
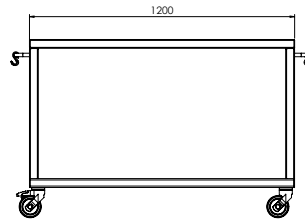
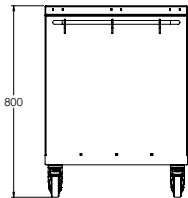
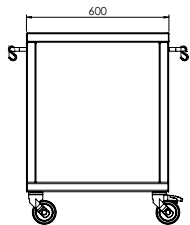
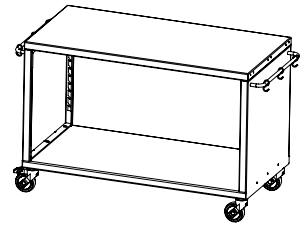
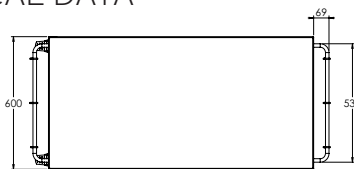
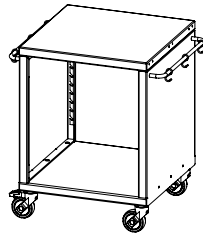
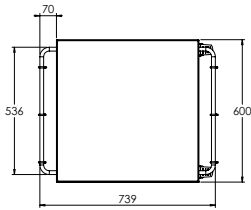
MORSØ GARDEN TABLE



MORSØ TERRA TABLE



## TECHNICAL DATA



**MORSØ GARDEN & TERRA OUTDOOR TABLE**  
With the two tables from Morsø, Garden and Terra you have the elements of a flexible outdoor kitchen. The working height is very comfortable when you work. The large space below the table lets you store firewood, herbs, and whatever else a grillmaster and pizza baker might need to have close to hand. The outdoor table can easily be pushed around using the stainless handle, and the three hooks can be used to hang tools and dishcloths.

### MORSØ GARDEN TABLE

Item no. .... 62982400  
Height .....800 mm  
Width ..... 1200 mm  
Depth .....600 mm  
NW (kg) .....60 kg  
GW (kg) ..... 65 kg  
Colour ..... Black  
Material..... Powder-coated steel, stainless steel  
Items per 40'HC container: 168 items/EU pallet 6 items

### MORSØ TERRA TABLE

Item no. .... 62984300  
Height .....800 mm  
Width .....600 mm  
Depth .....600 mm  
NW (kg) .....40 kg  
GW (kg) ..... 45 kg  
Colour ..... Black  
Material..... Powder-coated steel, stainless steel  
Items per 40'HC container: 336 items/EU pallet 12 items

Designer: Klaus Rath

