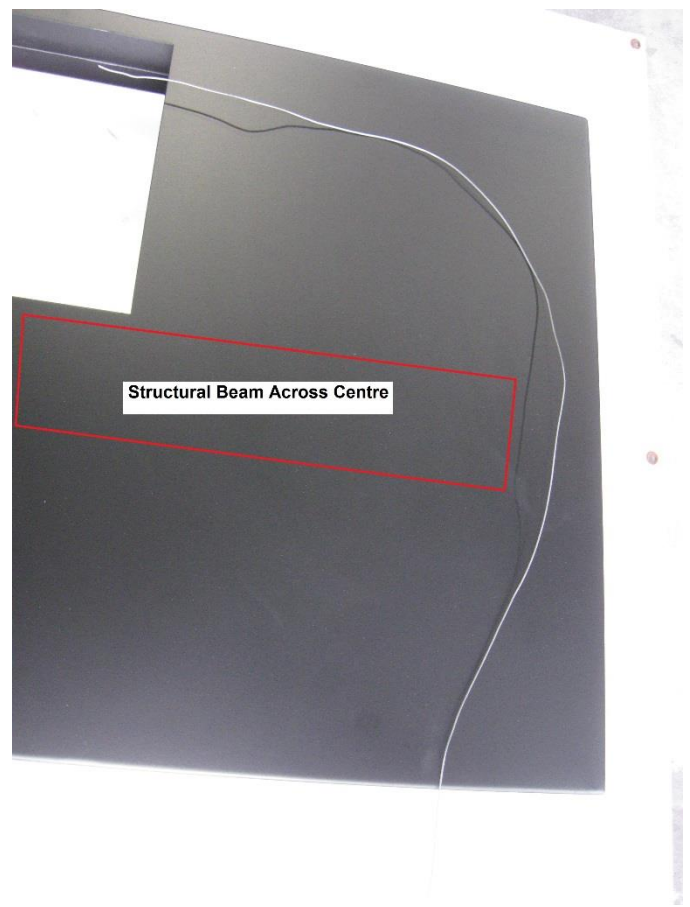
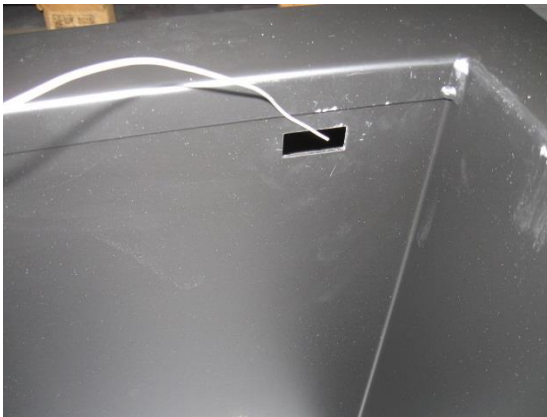


ADF Freestanding Assembly to Bench Cut Out

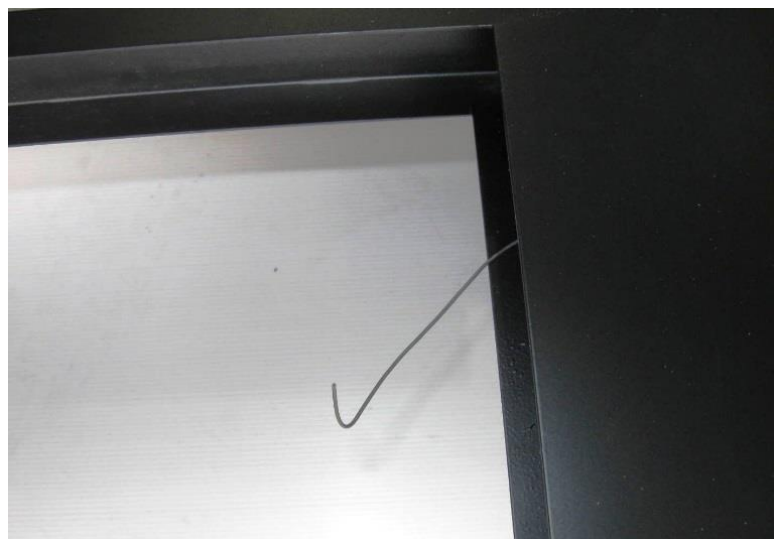
1. The Bench has a structural beam through centre. With 50mm gap at RHS. Pass a stiff bent wire through the hole for the switch so it goes through this gap, then bends around toward the cutout for the fan to sit.



2. Insert through Switch Hole in the underside at the front.



3. Push wire around until it comes through the back into the Fan cut out.



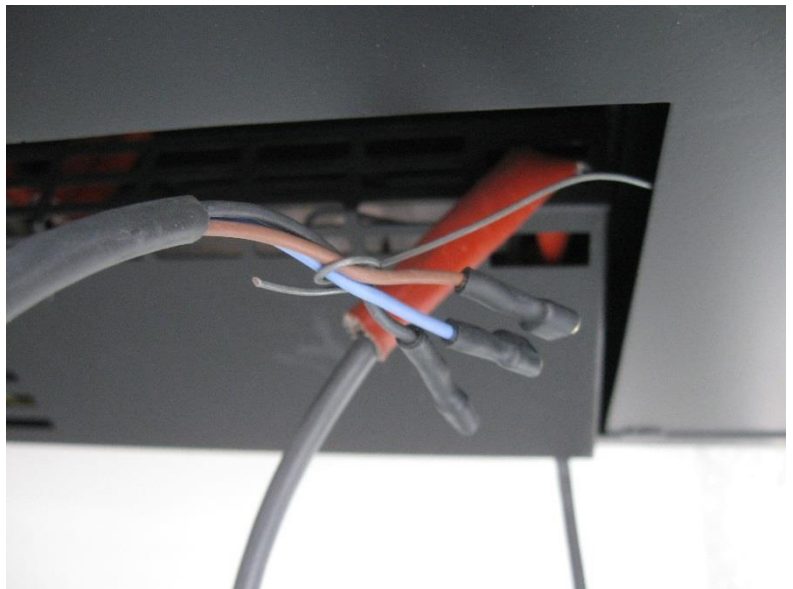
ADF Freestanding Assembly to Bench Cut Out

4. With Heater on its back remove feet, then lower fan into position onto the bench.

Careful it is heavy!



5. Use the stiff wire to pull through the electrical cable through to the switch hole at the front.



6. Connect the Wires to the same positions as before, Brown to Thermostat setting, Blue to Manual High setting.

